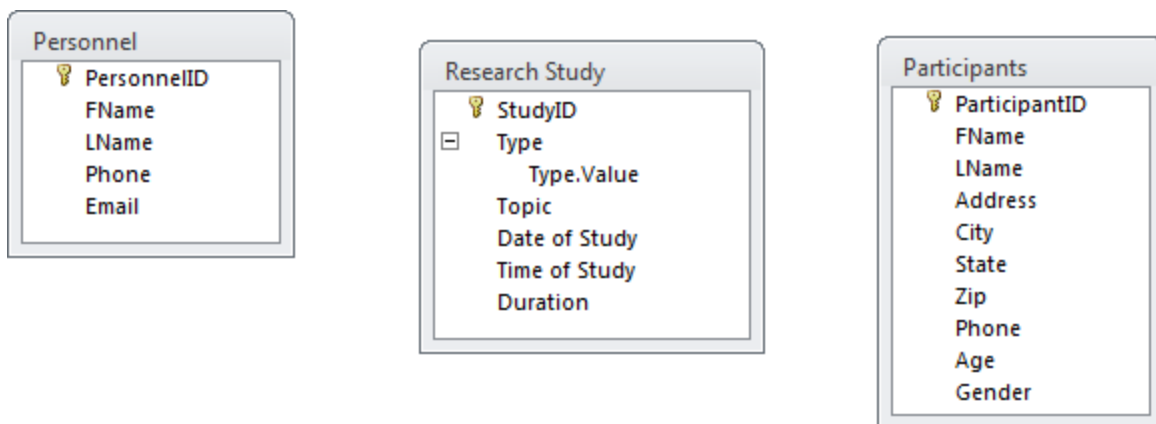


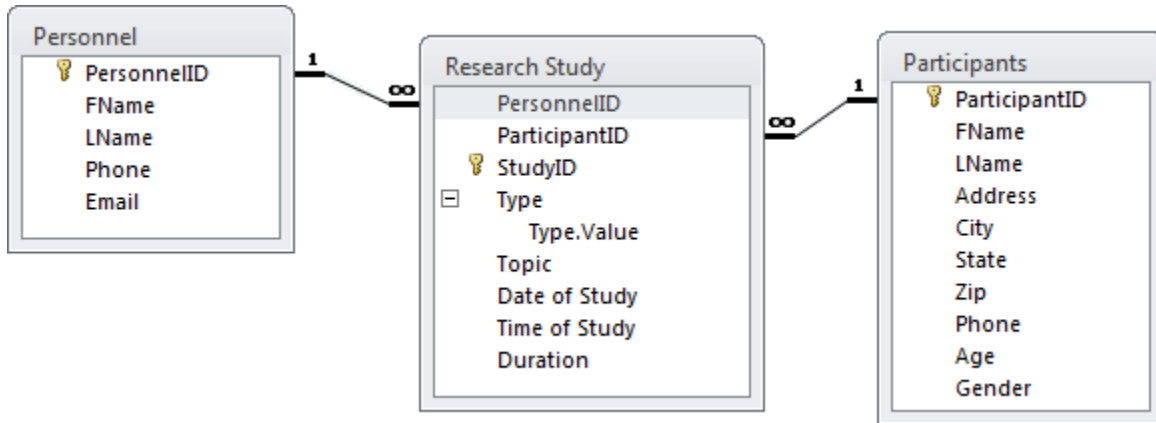
### Creating Table Relationships

Below are the tables in your database. You now need to tell Access which data is related. Since the Personnel and Participants would not connect without a Research Study to attend you know that there is not a direct relationship between these two tables.

The Personnel table contains a list of all of the people that conduct studies. The Participants table contains a list of all the people that volunteer for a study. Both of these tables are related to the Research Study table which contains a list of all the ongoing research studies. The Research Study needs to have both a Research Personnel and Participants assigned to it. In this relationship, the Research Study table is considered a junction table.



The related tables must have a common field to link the rest of the data. Normally this involves the Primary key. In this example, the Personnel table is a Primary table related to the Research Study table (child table). The relationship is a one-to-many relationship since research personnel is likely to conduct more than one research study. Therefore, to tell Access that this relationship exists, a foreign key is added to the Research Study table. The field must have the same data type and properties as the Primary key in the Primary table. The same is true for the Participants table.



There are essentially two ways to establish a table relationship with Access. You can use the Relationship screen to click and drag the primary key to the foreign key. You can also use the Lookup Wizard Data Type in the junction table to link to the field in the primary table.